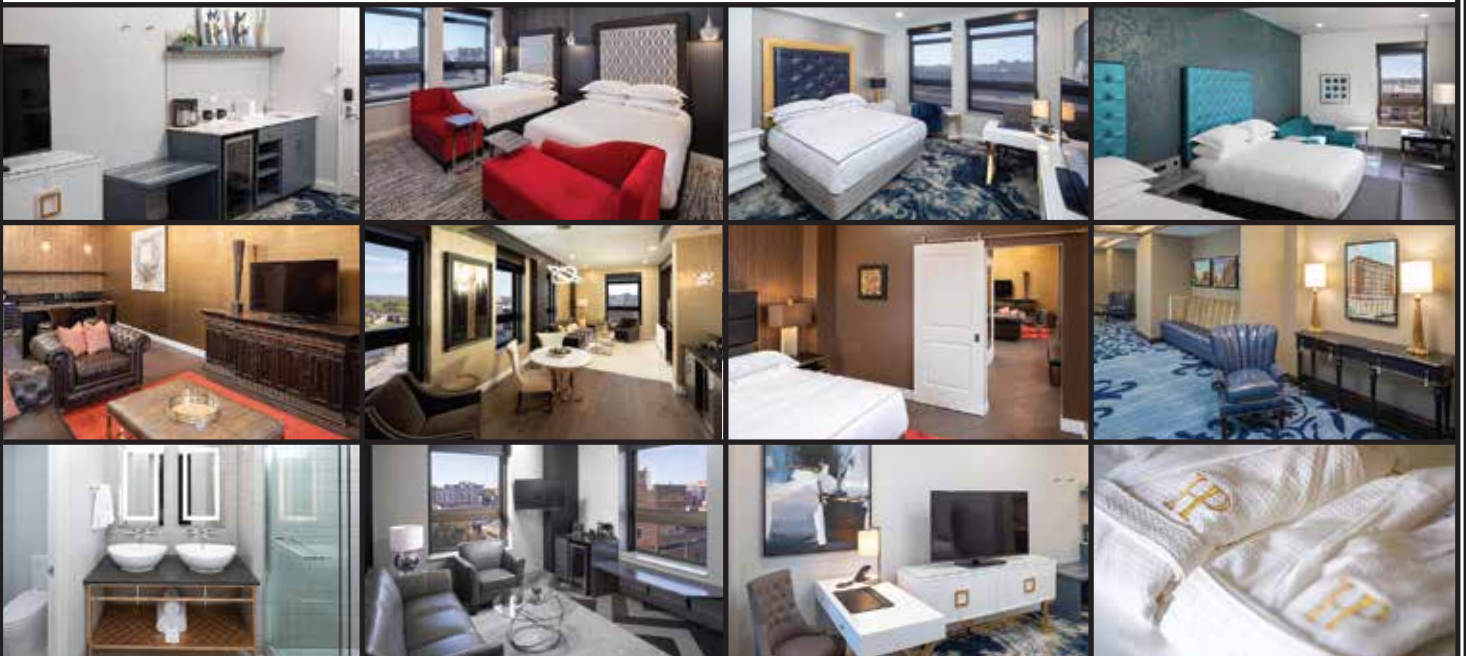


HOTEL ON PHILLIPS

was originally built as the Sioux Falls National Bank in 1918 and it continued to operate as a bank over the years and as office space on floors three through nine. At the time it was built, it was the tallest building in South Dakota. Located in the heart and soul of Sioux Falls, Phillips Avenue has an eclectic array of quaint retail stores, upscale restaurants and upbeat lounges in the Historical Downtown District. Hotel on Phillips revels in the views coupled with the sights and sounds of the Big Sioux River as the riverfront continues to grow with more activity each year. Centered in the lobby as the main focal point stands the original Bank Vault with its' 16-ton door and 24-3 inch bolts. The Bank Vault serves as a walk-through entrance to The Treasury Lounge. The Mezzanine overlooking the lobby showcases skylights, seating areas, a business center, a fitness center, Josiah's Library and Hattie's Parlour.



HOTEL ON PHILLIPS IS LOCATED EVERYWHERE YOU WANT TO BE IN SIOUX FALLS



AMENITIES

- 90 Upscale Guest Rooms & Suites
- Alexa Echo Dot controls: TV ■ Room Thermostat Ceiling ■ Lights ■ Informational In-Room Directory ■ Area Experiences
- Smart TV with Stay Casting Video on Demand & Cable ■ Complimentary WiFi
- Pillow Top Mattresses ■ Bathrobes ■ Hair Dryer
- Down Pillows & Hypoallergenic Pillows ■ Wet Bar
- Wine Glasses & Corkscrew ■ Beverage Cooler
- Iron & Ironing Board Delivered Upon Request
- In-room Gourmet Coffee With High Temp Brewer
- Walk-in Showers ■ ADA Accessible Rooms

ADDITIONAL SERVICES

- The Treasury Lounge - Cocktails & Cuisine
- Coffea Roasterie & Espresso Bar - Locally Roasted & Brewed
- Hattie's Parlour - Private Event Space Accommodates 65
- Bankers Board Room - Accommodates 12
- Josiah's Library
- The Market
- 24-Hour Fitness Center With Free Weights & Cardio Equipment
- 24-Hour Business Center Located In Mezzanine
- Luggage Storage

AREA ATTACIONS

- Sculpture Walk - 2 blocks
- Washington Pavilion of Arts and Science - 2 blks
- Sioux Empire Community Theatre - 2 blks
- Orpheum Theater Center - 2 blks
- Falls Park - 0.8 mi
- Falls Park Farmers Market - 0.8 mi (May to Oct)
- First Friday - First Friday of the Month (Downtown Block Party)
- Bike & Greenway Trail - 19 miles of Trail
- Great Plains Zoo - 2.3 mi
- USS South Dakota Battleship Memorial - 2.3mi

HP HOTEL ON PHILLIPS

100 NORTH PHILLIPS AVENUE ■ SIOUX FALLS, SD 57104
 605-274-7445 -- Ext 7004
 sales@hotelpil.com ■ www.hotelonphillips.com